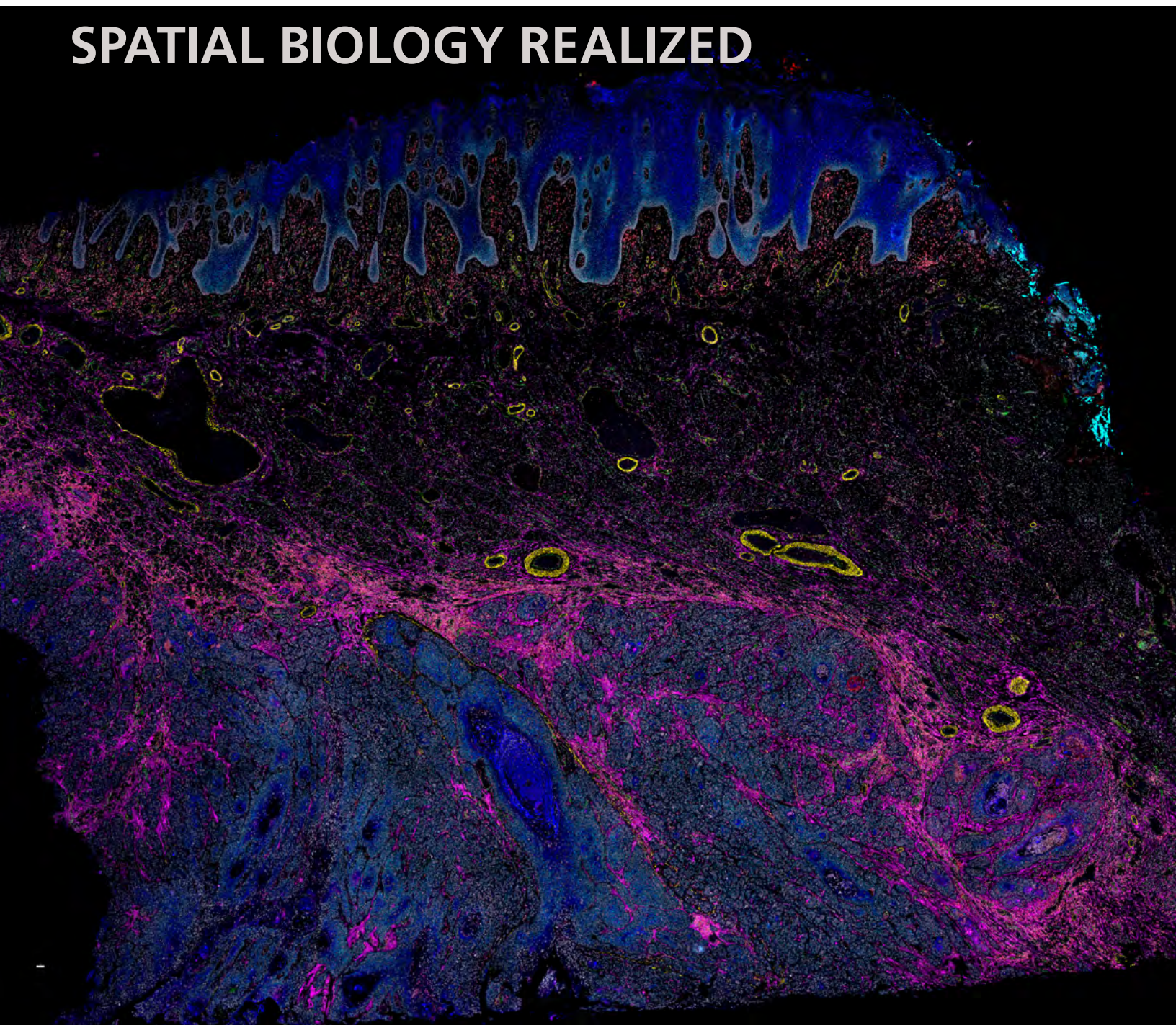


**RARECYTE**<sup>®</sup>  
Precision Biology for Life Sciences

**Orion**<sup>™</sup> **PLATFORM**

**SPATIAL BIOLOGY REALIZED**

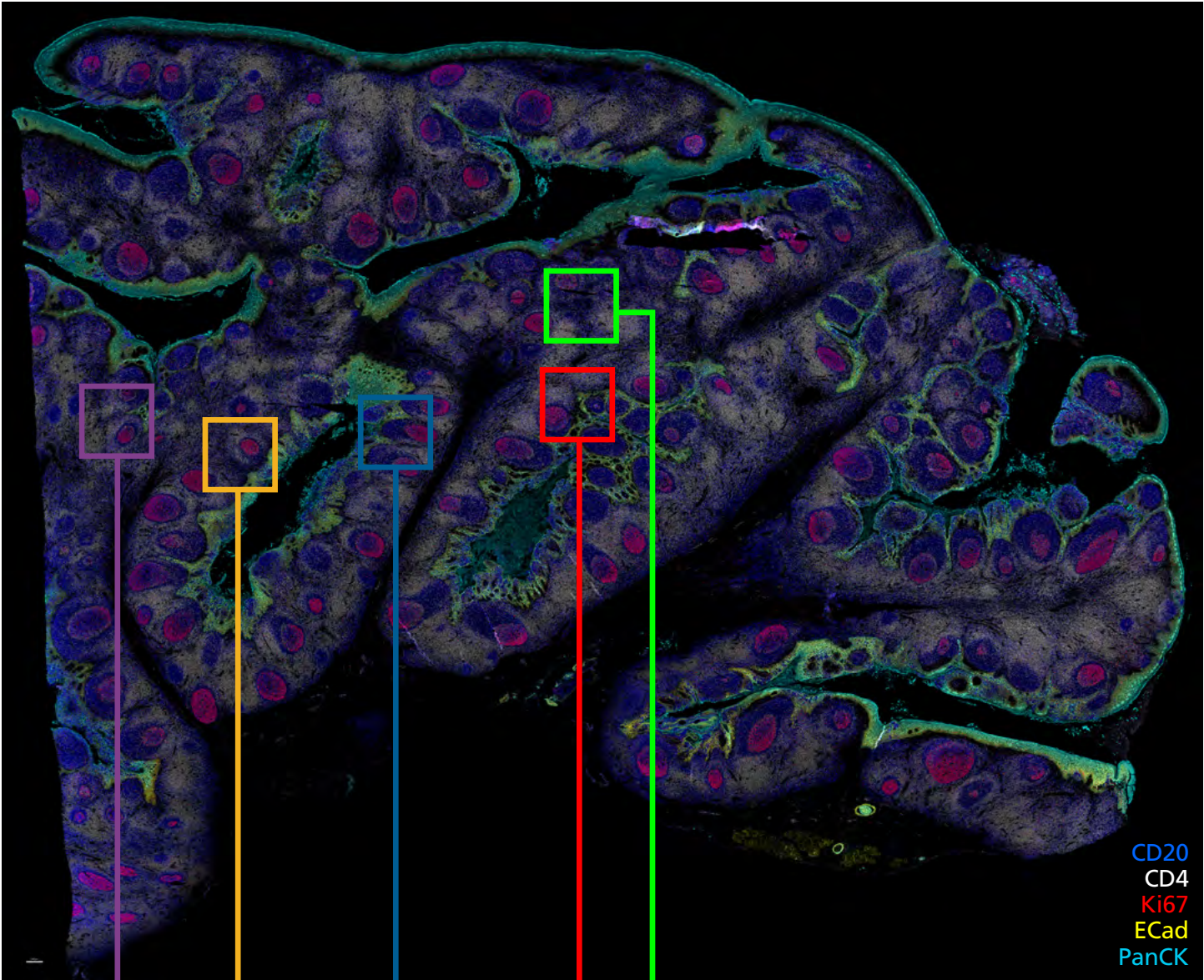




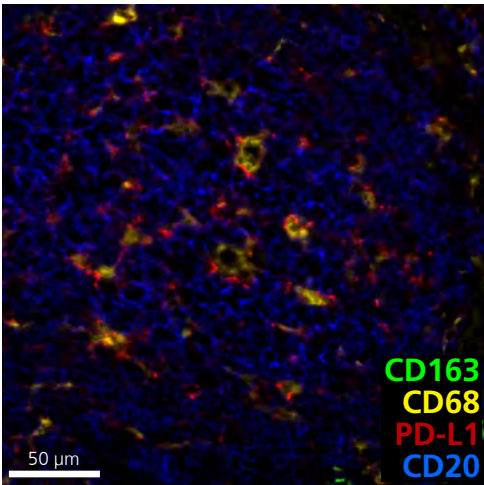
# RAPID, HIGH RESOLUTION WHOLE SLIDE SPATIAL BIOLOGY SOLUTION

The Orion platform is a novel technology and services platform offering the fastest path to whole slide, high-plex imaging. Combining speed and resolution, the Orion platform enables comprehensive phenotypic profiling and characterization of tissue architecture, tumor heterogeneity, and the immune response for whole sections in hours, not days.

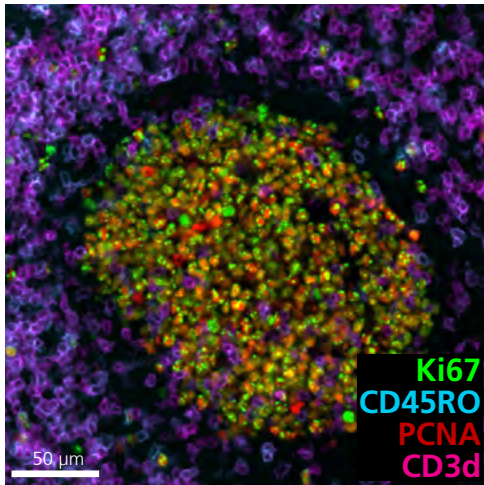
Run panels from an extensive biomarker list, add in custom biomarkers, or engage our services lab for custom panels and programs.



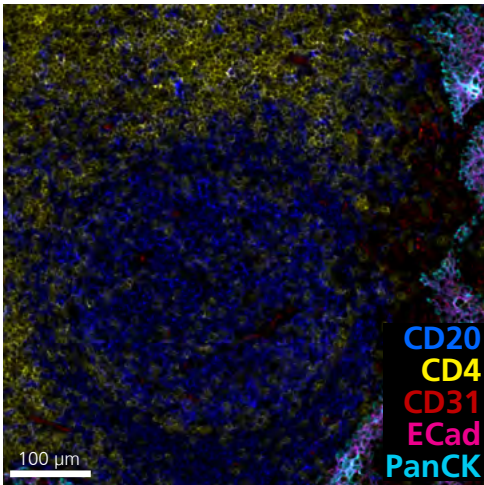
MYELOID & STROMAL



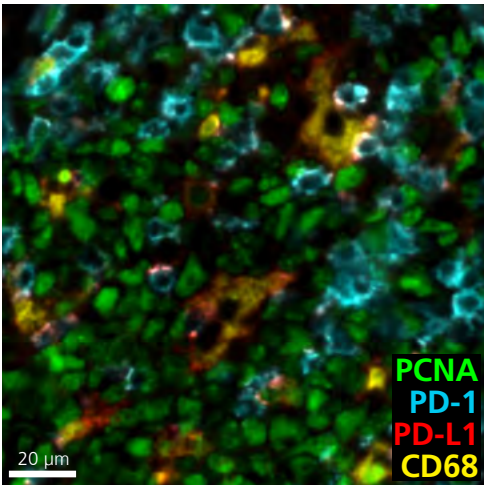
CELLULAR PROLIFERATION



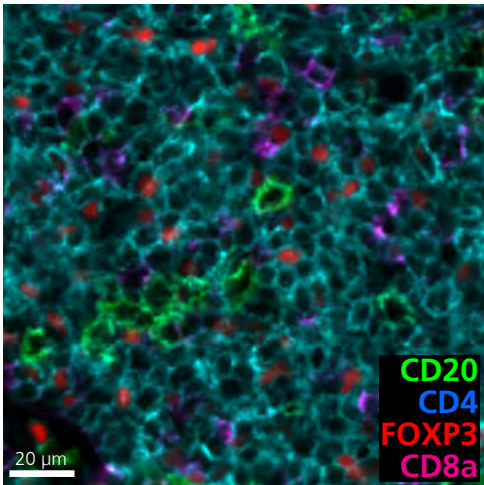
TISSUE ARCHITECTURE



IMMUNE CHECKPOINT



T-CELL SUBSETS



UNLOCK BIOLOGICAL  
INSIGHTS THROUGH  
ORION INTERACTIVE  
DATA SETS





# A COMPLETE SOLUTION OF PRODUCTS & SERVICES FOR HIGHLY MULTIPLEXED IMAGING

# Orion

The Orion platform utilizes patented integrated hardware, software, and reagents to deliver the high performance, resolution and flexibility required for research and clinical assays.



## ORION INSTRUMENT

Orion is a benchtop, high resolution, whole slide fluorescence imaging system that images multiple channels in a single scan. Orion accelerates phenotypic profiling and enables rapid, highly multiplexed tissue analysis.

### Specifications

- Whole slide, single scan in 3 hours for 1 cm<sup>2</sup> at 20x
- High resolution imaging
- Brightfield imaging capability
- Uses standard pathology slides
- Compatible with standard FFPE and fresh frozen tissue
- Fits on a standard laboratory benchtop (21" w x 22" d x 23.5" h)
- Compatible with third party image analysis software (OME-TIFF data format)

## ARTEMIS™ SOFTWARE

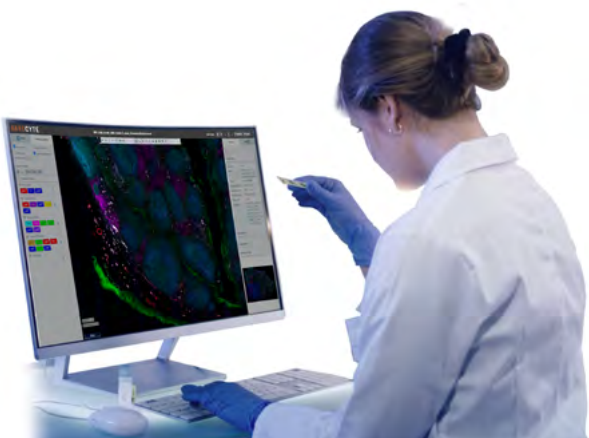
Orion's on-board Artemis software provides database functionality for easy file management and enables powerful image visualization, annotation, and sharing to facilitate collaboration for highly multiplexed datasets. Users also have the flexibility to export raw data to the interpretation pipeline of their choice.



## ORION REAGENTS

Orion reagents are designed for maximum flexibility in developing highly multiplexed tissue panels to meet your research needs. A single staining process, based on standard IHC and IF protocols, makes Orion reagents convenient for staining.

Inquire with our team to find out about our panels and labeled antibodies, and how to create custom panels that incorporate your antibodies.



## PRECISION BIOLOGY SERVICES

Orion technology supports all aspects of spatial tissue services for pharma partners and translational medicine researchers.

Our team works with you to define custom panels and program requirements; utilizing reagents, consumables, and instrumentation that provide a sensitive, accurate, and reproducible workflow.

With scientific rigor and under pathologist guidance, our team will deliver high quality results for your program.



# A PRACTICAL WORKFLOW FOR RESEARCH AND CLINICAL APPLICATIONS



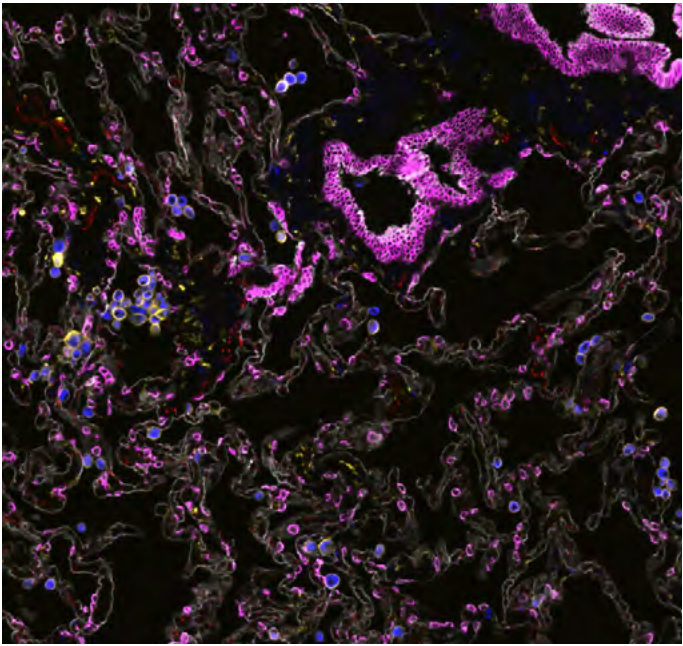
## UNLOCK SPATIAL BIOLOGY WITH ORION TECHNOLOGY

- |                                      |  |
|--------------------------------------|--|
| ✓ Whole slide fluorescence imaging   | ✓ Flexible panel design                    |
| ✓ Stain and image in hours, not days | ✓ FFPE & fresh frozen tissue compatibility |
| ✓ Single-staining procedure          | ✓ Uses standard microscope slides          |
| ✓ High resolution                    | ✓ Clinical lab suitability                 |
| ✓ H&E imaging                        | ✓ Open file format                         |

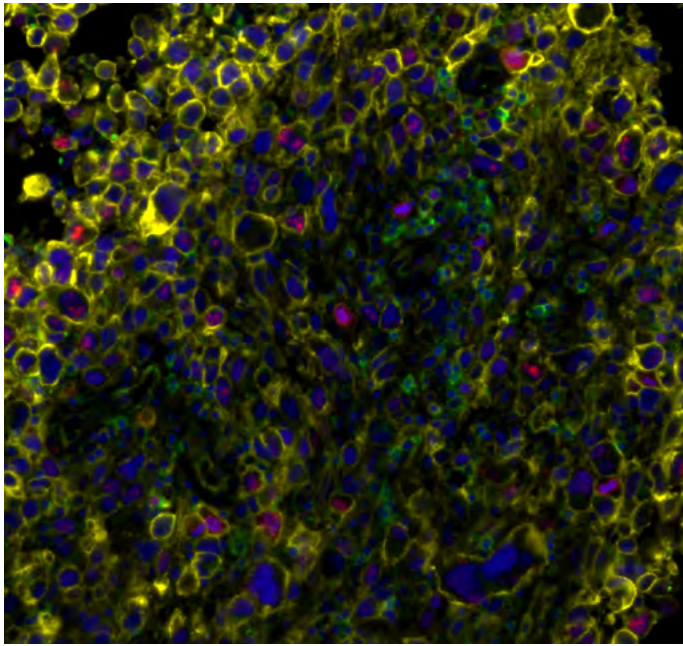
## ENABLE RAPID SPATIAL ANALYSIS

Orion enables single round IF staining and imaging of standard FFPE or fresh frozen tissue with the additional benefits of industry standard H&E and IHC modes.

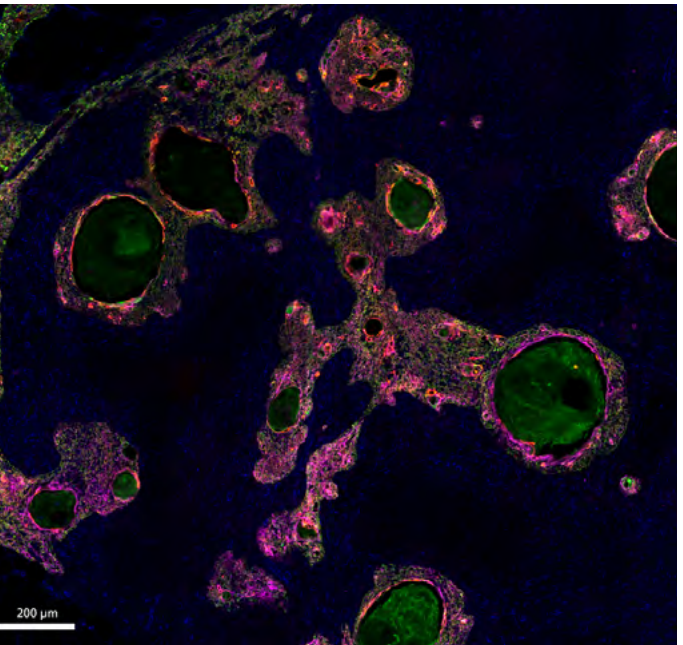
Lung



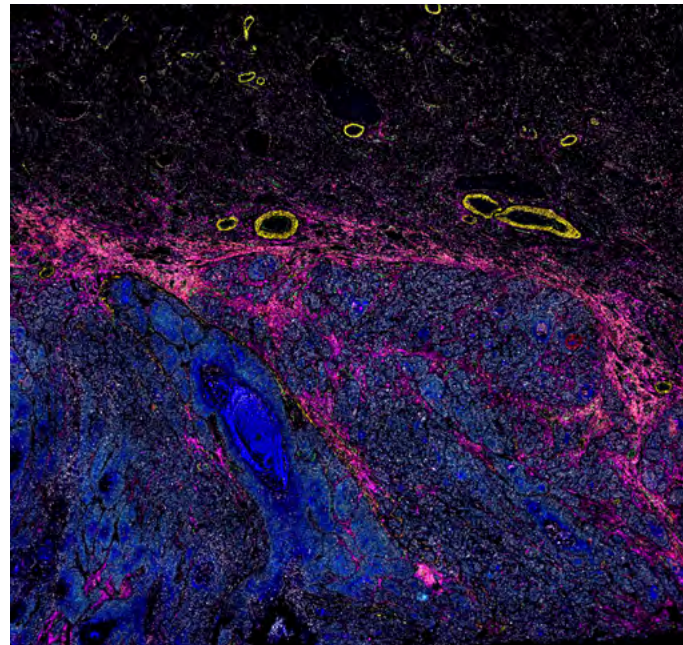
Melanoma



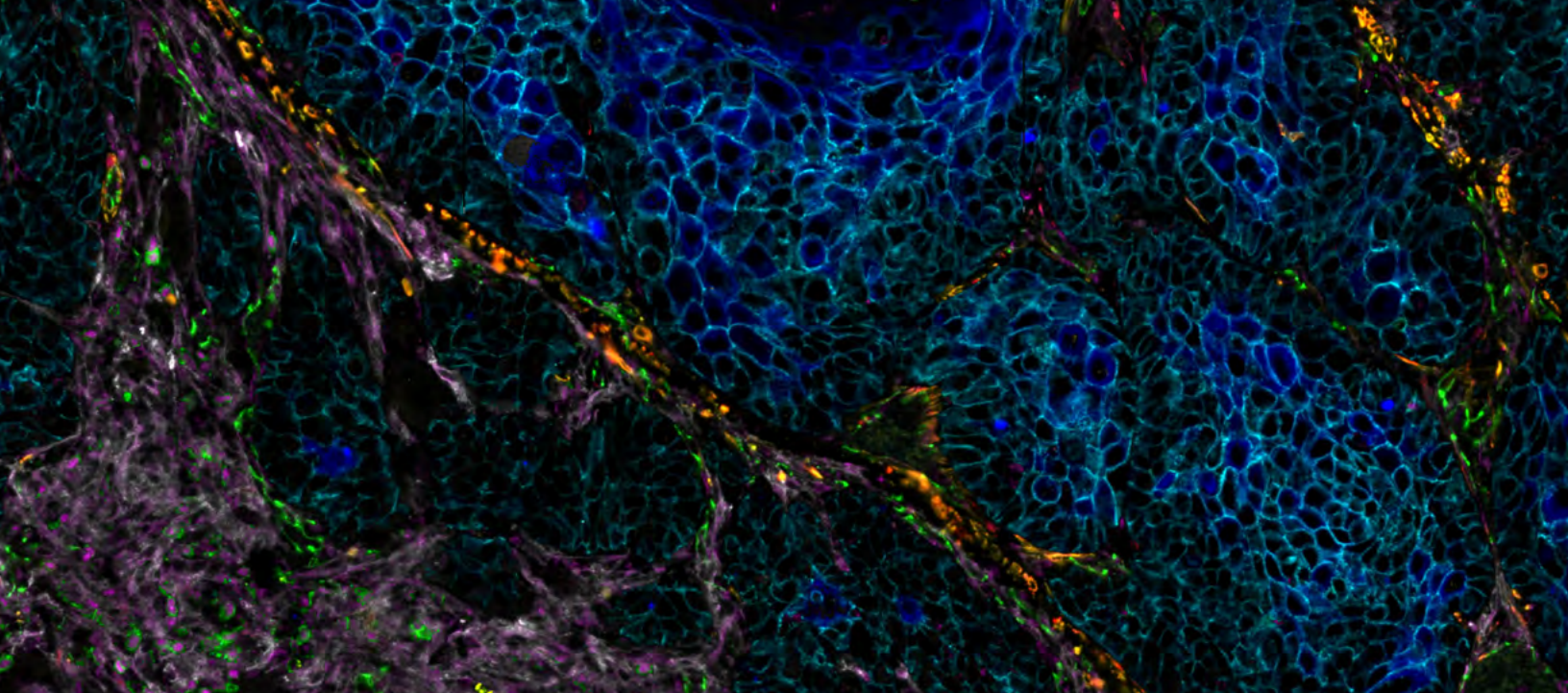
Thymus



Tongue







# Orion

SPATIAL BIOLOGY REALIZED



**RARECYTE**<sup>®</sup>  
Precision Biology for Life Sciences

2601 Fourth Ave  
Seattle, WA 98121

855.727.3298  
206.455.9092

[www.rarecyte.com](http://www.rarecyte.com)

© 2022 RareCyte, Inc. All rights reserved.

RareCyte, the stylized logo, Orion, and Artemis are trademarks or registered trademarks of RareCyte, Inc. in the United States and other countries. All other brand and product names are trademarks or registered trademarks of their respective owners.

For Research Use Only. Not for use in diagnostic procedures.

BR21-101-220323

